

Günter Lampe
"Cadenza" per flauto solo (1971)
(aus „Pezzo movimento“ - Konzert für Flöte und großes Orchester)

fl. solo

*)

Handwritten musical notation on a single staff. It begins with a treble clef and a key signature of one flat (B-flat). The first measure contains a triplet of eighth notes: B-flat, B-flat, B-flat. This is followed by a series of chords and notes, including a half note G with a trill above it. The notation is somewhat sketchy and expressive.

Handwritten musical notation on a single staff. It starts with a treble clef and a key signature of one flat. The first measure is a sixteenth-note triplet: G, A, B-flat. This is followed by a series of chords and notes, including a half note G with a trill above it. The notation is somewhat sketchy and expressive.

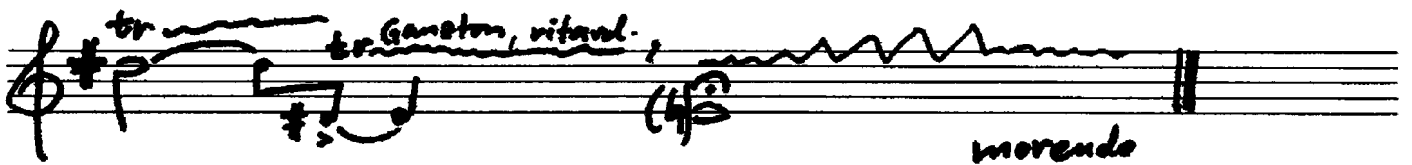
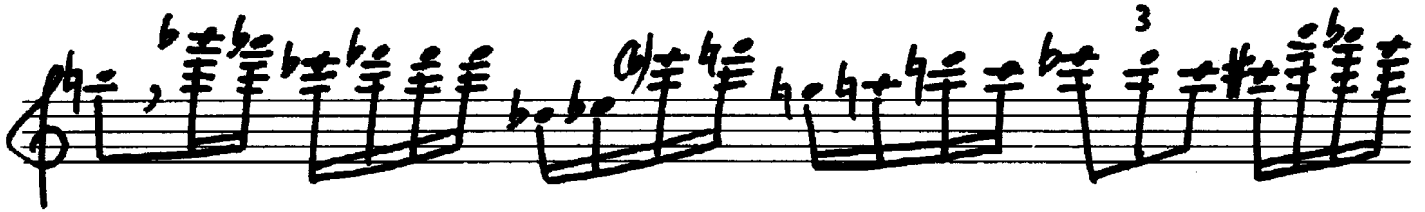
Handwritten musical notation on a single staff. It starts with a treble clef and a key signature of one flat. The first measure is a sixteenth-note triplet: G, A, B-flat. This is followed by a series of chords and notes, including a half note G with a trill above it. The notation is somewhat sketchy and expressive.

Handwritten musical notation on a single staff. It starts with a treble clef and a key signature of one flat. The first measure is a sixteenth-note triplet: G, A, B-flat. This is followed by a series of chords and notes, including a half note G with a trill above it. The notation is somewhat sketchy and expressive.

Handwritten musical notation on a single staff. It starts with a treble clef and a key signature of one flat. The first measure is a sixteenth-note triplet: G, A, B-flat. This is followed by a series of chords and notes, including a half note G with a trill above it. The notation is somewhat sketchy and expressive.

Phrasierung ad libitum

Handwritten musical notation on a single staff. It starts with a treble clef and a key signature of one flat. The first measure is a sixteenth-note triplet: G, A, B-flat. This is followed by a series of chords and notes, including a half note G with a trill above it. The notation is somewhat sketchy and expressive.



x) Die Interpretation soll in freier Gestaltung erfolgen.
 Die notierten Zeitdauern sind lediglich relative Hinweise für die Tempi der melodischen Figuren.

Zeichen: \times = Flatterzunge

5. (senza) \times = ohne Flatterzunge

\sim = starkes, dann schwächer werdendes Vibrato

\cup = Senken und Anheben des betreffenden Tons

\rightarrow, \rightarrow = Anheben od. Senken eines Tons